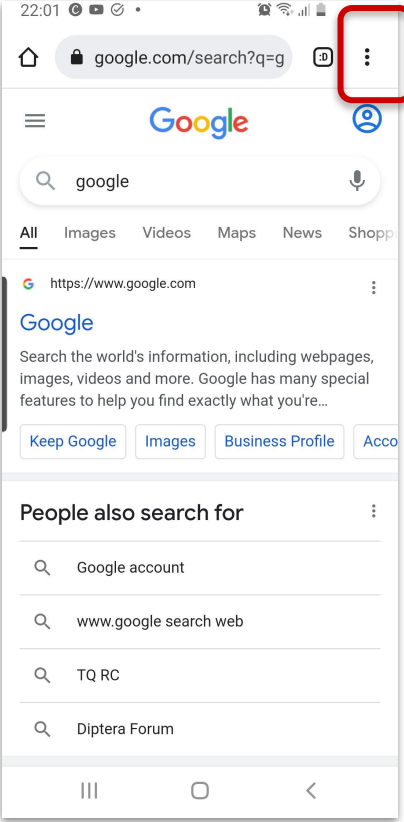
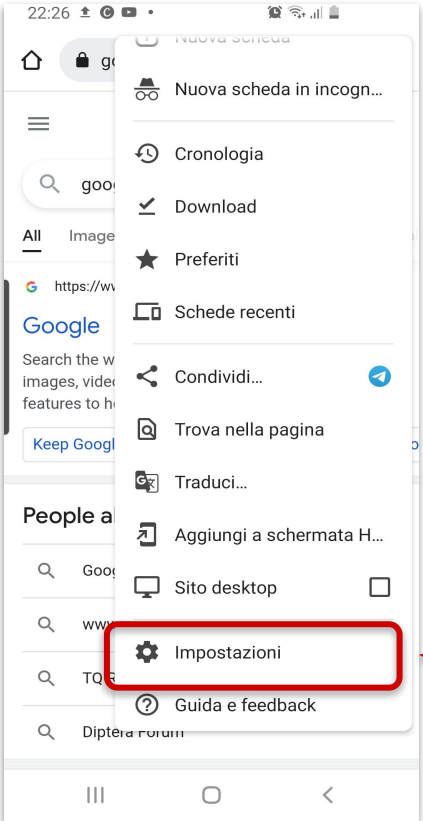


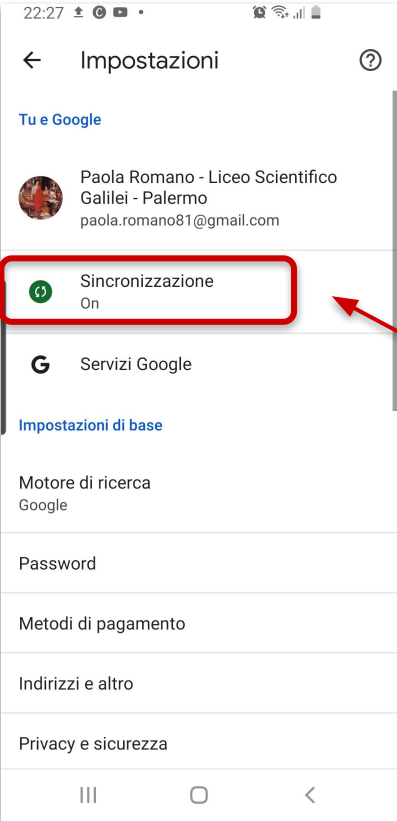


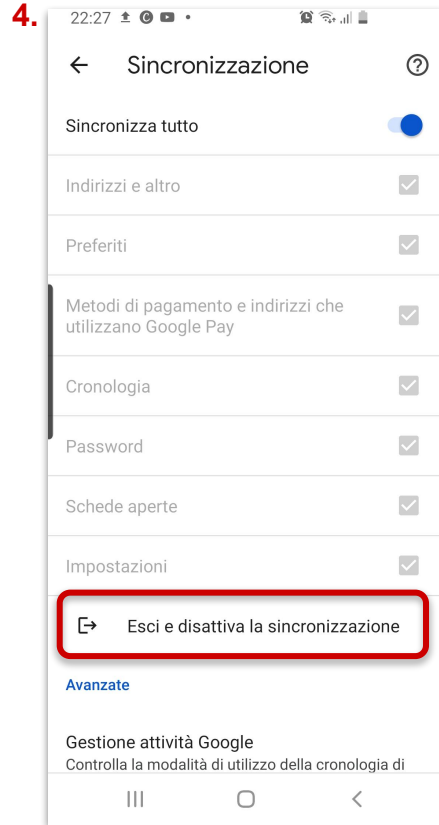
Account istituzionale su dispositivo mobile

Sistema operativo: Android Browser: Chrome

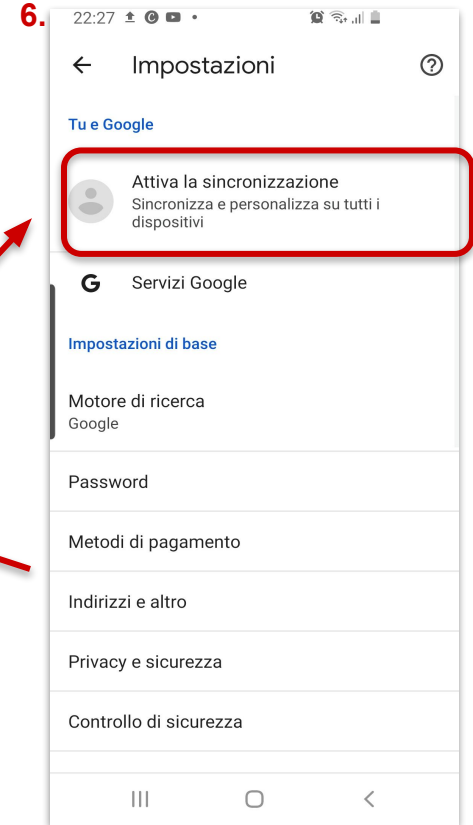
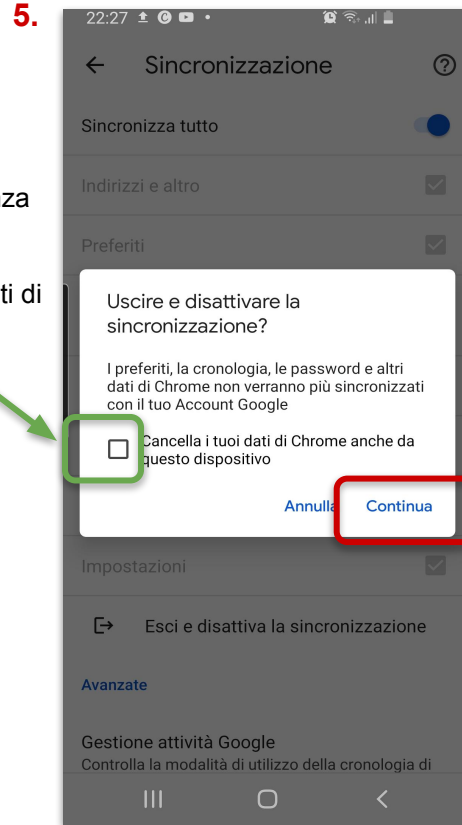
1. 

2. 

3. 

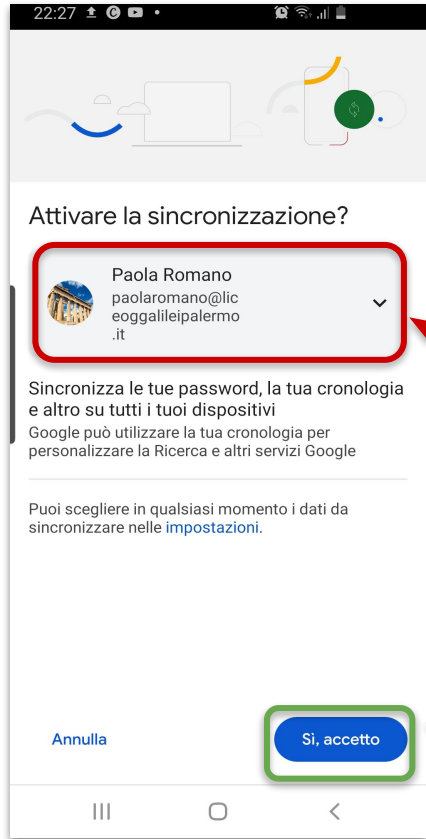


da lasciare senza spunta se si desidera mantenere i dati di Chrome sul dispositivo





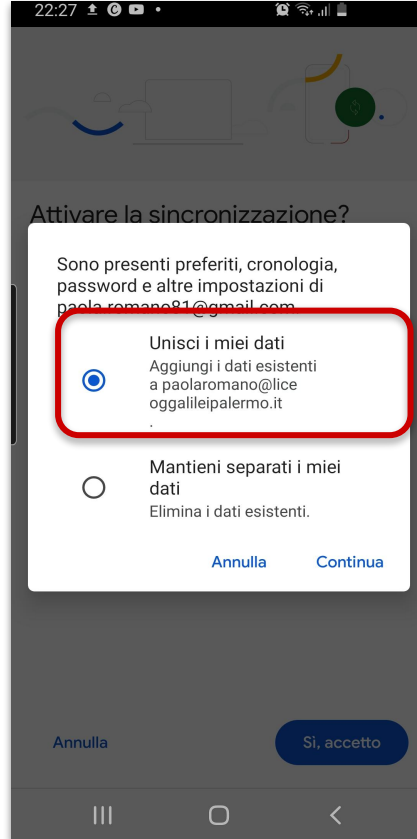
7.



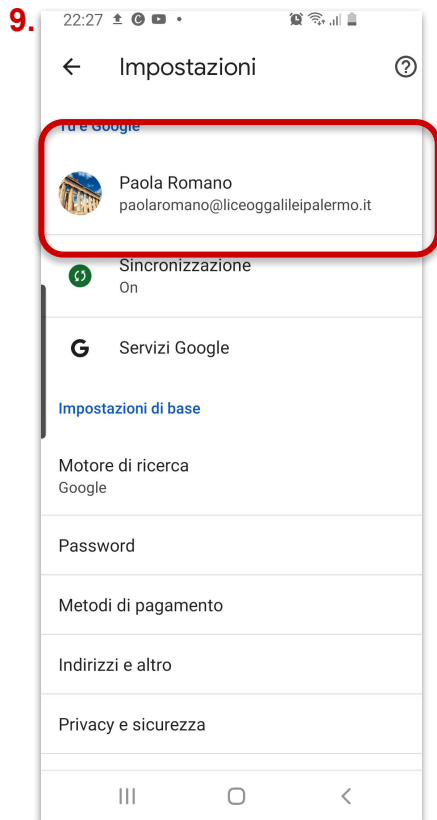
a. scegliere il proprio account istituzionale

b.

8.



non è necessario eliminare i dati esistenti



accesso all'account
scolastico effettuato
correttamente

